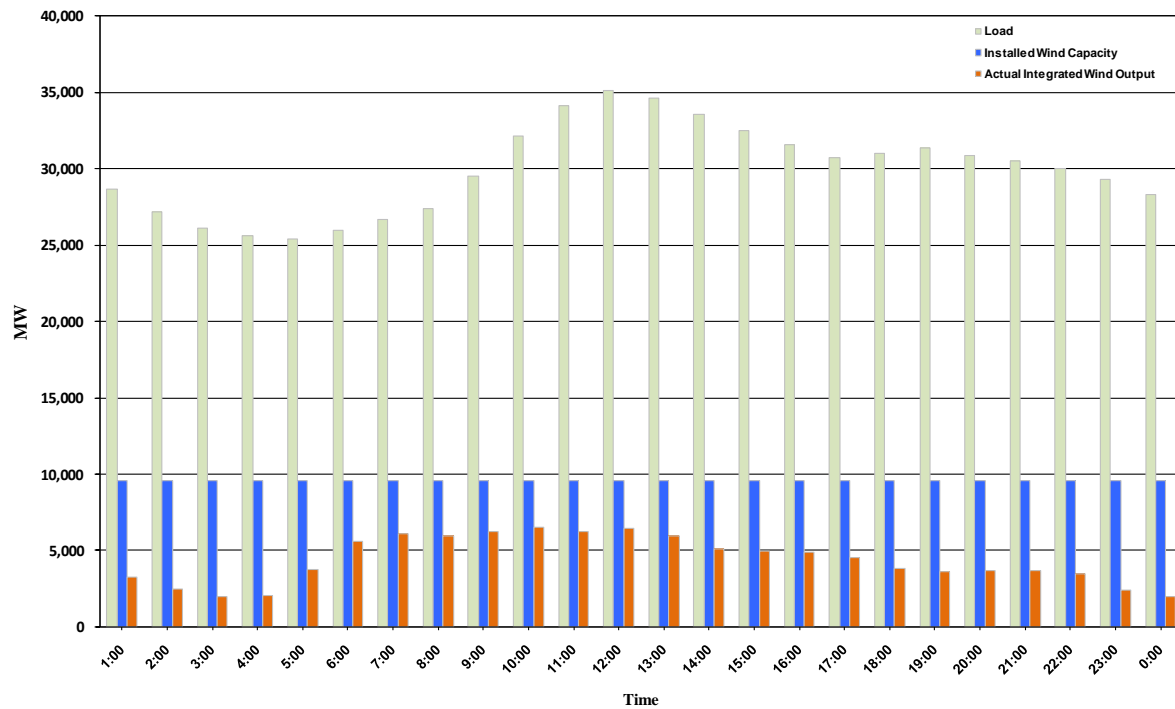




ERCOT Grid Operations Wind Integration Report: 11/25/10

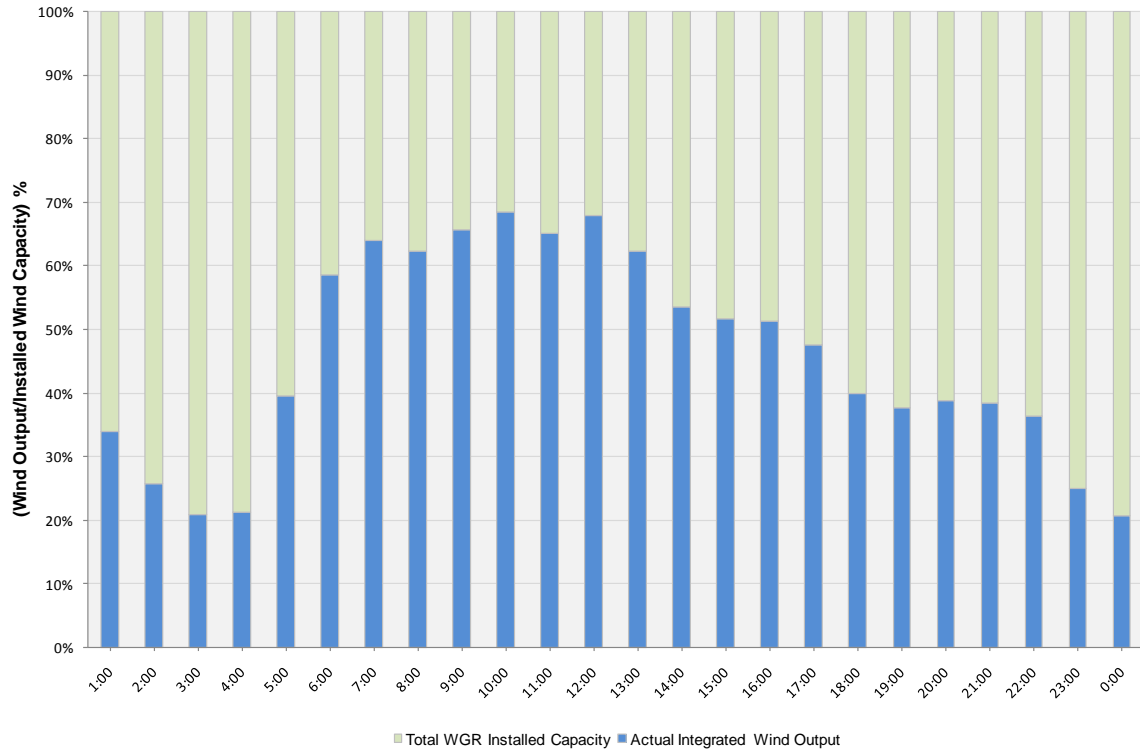
Peak Load	35,120 MW
Load Peak Hour	12
Wind Record 06/12/10	7016 MW
Max Wind value	6731 MW
Wind Peak Hour	06:05:56
Wind Integration %	25.36

Hourly Average Actual Load vs. Actual Wind Output
11-25-2010

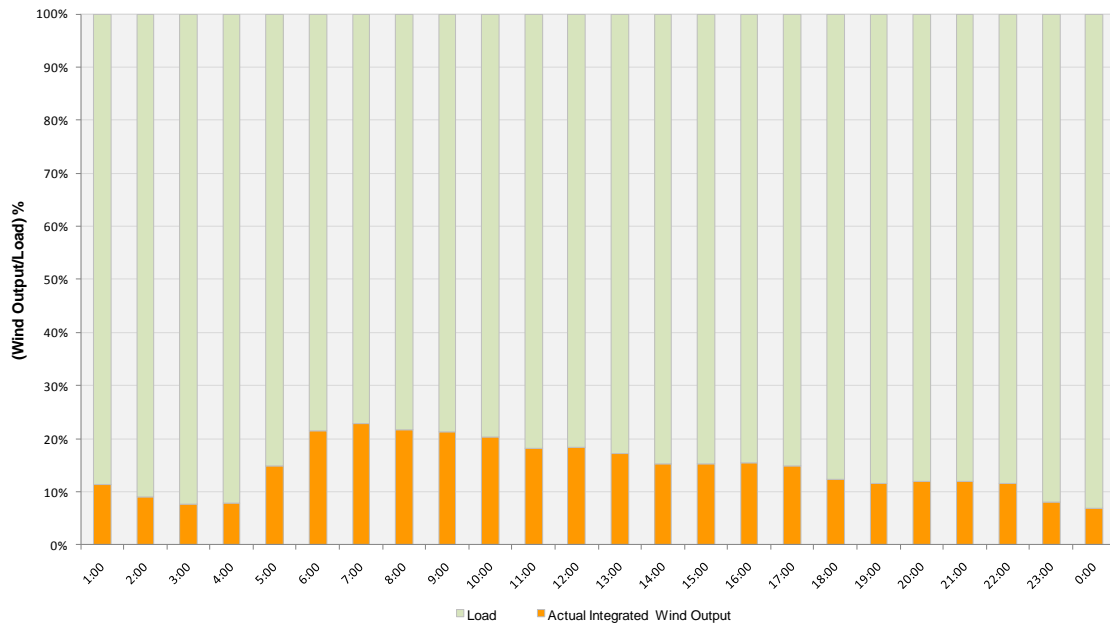




Actual Wind Output as a Percentage of the Total Installed Wind Capacity
11-25-2010



Actual Wind Output as a Percentage of the ERCOT Load
11-25-2010





ERCOT Load vs. Actual Wind Output 11/18/10 - 11/25/10

